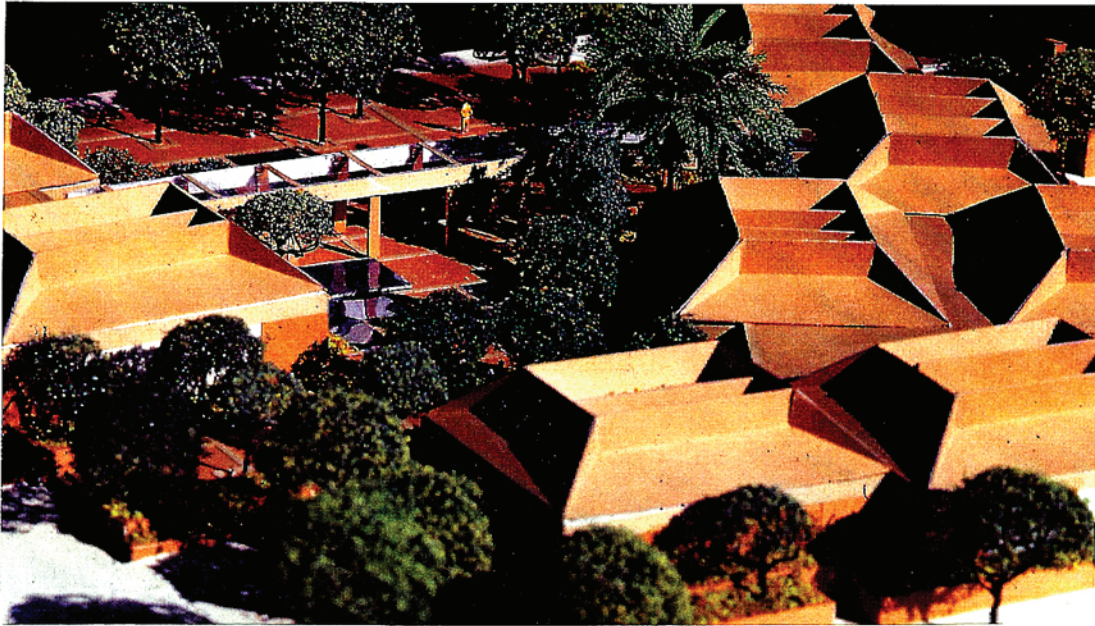


Hansen Associates Designs a Civic Center Complex including Fire Station, Police Facility and City Offices



Hansen Associates of Tiburon, California recently completed designs for a civic center complex including city offices and a fire house for the City of Pinole, California. The project bid was received 5.6 percent below estimate of probable construction cost.

The new complex is composed of 10 modular elements linked together to form a courtyard. Easy ground level access is provided to each element. Surrounding the complex is contoured landscaping constructed with the earth obtained from the subgrade parking garage excavation.

The offices' lobbies can be used for exhibitions, official functions and receptions. The city council chamber provides meeting space for community groups.

The complex's open appearance is created by skylights centrally located in each pavillion and over the connecting gallery. Few windows are provided in order to maintain a high level of security.

The fire house is designed with a drive-through engine room that permits a quick emergency response and allows the public a view of the fire fighting equipment. Dayroom, kitchen and dormatories are located around a central courtyard and provide firemen privacy.

The city offices are situated such that each group of offices forms an undisturbed work environment with general office services centrally located and equally accessible to all areas.

The civic center design combines passive energy features such as tree shaded windows with skylights for controlling interior daylight and heat gain with solar collector roof units which provide 40 percent of the heating. Energy is conserved by pumping that from warm to cold spaces whenever they co-exist. A closed water loop system using reverse cycle water to air pumps provides maximum economical flexibility.

The tight cost control for the project required fast track scheduling in order to preserve the purchasing power of the dollar. Contract documents were developed within three months. □